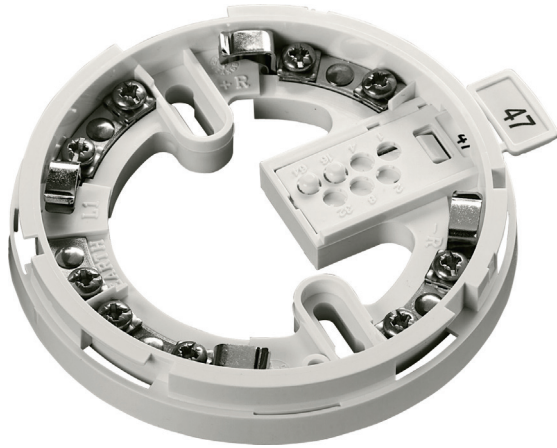


XPERT7

Intelligent Mounting Base



Manufacturer's Specification

All data is supplied subject to change without notice. Specifications are typical at 24 V, 25°C and 50% RH unless otherwise stated.

Dimensions	100mm dia. x 15.6mm height
Weight	56g
Materials	Base: White flame-retardant polycarbonate Terminals: Nickel plated stainless steel

Product Overview

Product	Mounting Base
Part No.	45681-210APO

Product Information

All detectors in the XP95 and Discovery ranges fit onto the low insertion force Intelligent Mounting Base with stainless steel contacts for the detector terminals. XPERT7 cards are supplied with all bases.

- XPERT addressing
- One-way fit of detectors
- Locking feature to prevent unauthorised detector removal

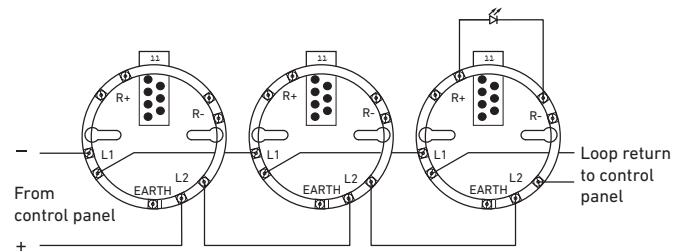
Cable connections of up to 2.5 mm diameter are made via captive cable clamps.

There are four double terminals and a single one.

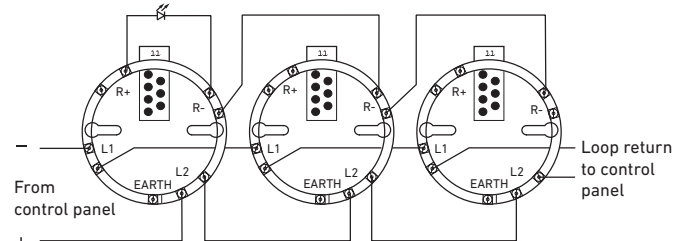
- L1 - Line IN and OUT, double terminal.
- L2+ - Line IN and OUT, double terminal.
- +R - remote LED positive supply, double terminal
- R - remote LED negative supply, double terminal

The remaining single terminal is isolated and can be used to provide continuity of an earth or shield.

Wiring Diagrams



XPERT7 Intelligent Mounting Base - schematic wiring diagram



Schematic wiring diagram of an analogue addressable detector circuit with a common remote LED